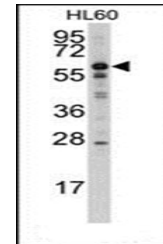


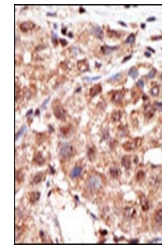
## Product Datasheet

### MTM1 antibody (orb37042)

<b>Description</b>	Purified rabbit polyclonal antibody
<b>Species/Host</b>	Rabbit
<b>Reactivity</b>	Human
<b>Conjugation</b>	Unconjugated
<b>Tested Applications</b>	ELISA, IHC-P, WB
<b>Immunogen</b>	This MTM1 antibody is generated from rabbits immunized with a KLH conjugated synthetic peptide between 1-30 amino acids from the N-terminal region of human MTM1
<b>Target</b>	MTM1
<b>Form/Appearance</b>	Purified polyclonal antibody supplied in PBS with 0.09% (W/V) sodium azide
<b>Storage</b>	Maintain refrigerated at 2-8°C for up to 2 weeks. For long term storage, store at -20°C in small aliquots to prevent freeze-thaw cycles
<b>Note</b>	For research use only
<b>Isotype</b>	IgG
<b>Clonality</b>	Polyclonal
<b>Purity</b>	This antibody is prepared by Saturated Ammonium Sulfate (SAS) precipitation followed by dialysis against PBS
<b>MW</b>	69932 Da
<b>Uniprot ID</b>	<a href="#">Q13496</a>
<b>NCBI</b>	<a href="#">NP_000243.1</a>
<b>Dilution Range</b>	WB: 1:1000, IHC-P: 1:50-100
<b>Expiration Date</b>	12 months from date of receipt.



Western blot analysis of in HL60 cell li...



Formalin-fixed and paraffin-embedded hum...