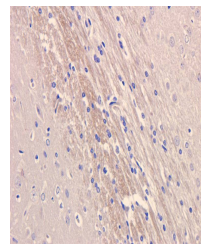


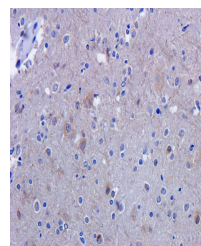
Product Datasheet

MCP1 antibody (orb36895)

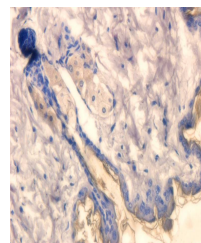
Description	MCP1 antibody
Species/Host	Rabbit
Conjugation	Unconjugated
Tested Applications	ICC, IF, IHC-P, WB
Immunogen	KLH conjugated synthetic peptide derived from human MCP1. Please contact us for the exact immunogen sequence. The peptide is available as orb374822.
Target	MCP1
Form/Appearance	10 mM PBS, 0.02% sodium azide
Concentration	- 100 µg (in 200 µl): 0.5 mg/ml- 200 µg (in 400 µl): 0.5 mg/ml
Storage	Store at 4°C for up to two weeks. For long term storage, aliquot and store at -20°C, avoid freeze/thaw cycles.
Note	For research use only
Isotype	IgG
Clonality	Polyclonal
Purity	Polyclonal antibodies are purified by peptide affinity chromatography
MW	11 kDa
Uniprot ID	P13500
NCBI	002982 , 002973 , 31 , 11
Entrez	6347
Dilution Range	IF/ICC: 1:50-500, IHC-P: 1:50-300, WB: 1:200-1000
Expiration Date	12 months from date of receipt.



Immunohistochemical staining of rat brain tissue using MCP1 antibody.



IHC-P staining of rat brain tissue using MCP1 antibody.



IHC-P image of rat skin tissue using MCP1 antibody.