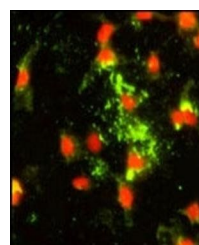
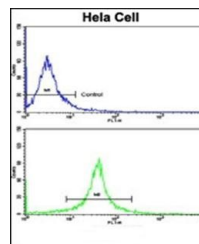


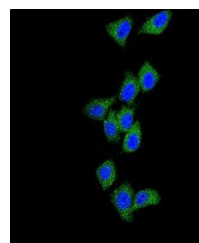
Product Datasheet

Caspase 8 antibody (orb36701)

Description	Rabbit polyclonal antibody to Caspase 8
Species/Host	Rabbit
Reactivity	Human, Mouse
Conjugation	Unconjugated
Tested Applications	FC, WB
Immunogen	Synthetic Peptide
Target	CASP8
Form/Appearance	Purified polyclonal antibody supplied in PBS with 0.09% (W/V) sodium azide. This antibody is purified through a protein A column, followed by peptide affinity purification.
Storage	Maintain refrigerated at 2-8°C for up to 2 weeks. For long term storage store at -20°C in small aliquots to prevent freeze-thaw cycles
Note	For research use only
Isotype	Rabbit IgG
Clonality	Polyclonal
MW	55391
Uniprot ID	Q14790
NCBI	NP_203522.1 , NP_203519.1 , NP_001073593.1 , NP_001073594.1 , NP_001219.2 , NP_203520.1
Dilution Range	WB: 1:2000
Expiration Date	12 months from date of receipt.



Immunofluorescence analysis of HeLa cell...



Immunofluorescence analysis of HeLa cell...