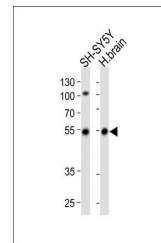
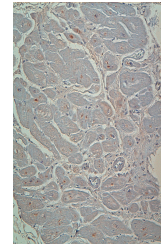


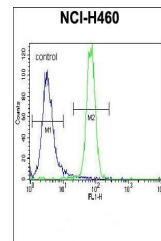
Product Datasheet

Parkin antibody (orb36591)

Description	Rabbit polyclonal antibody to Parkin
Species/Host	Rabbit
Reactivity	Human
Conjugation	Unconjugated
Tested Applications	WB
Immunogen	Synthetic Peptide
Target	PRKN
Form/Appearance	Purified polyclonal antibody supplied in PBS with 0.09% (W/V) sodium azide. This antibody is purified through a protein A column, followed by peptide affinity purification.
Storage	Maintain refrigerated at 2-8°C for up to 2 weeks. For long term storage store at -20°C in small aliquots to prevent freeze-thaw cycles
Note	For research use only
Isotype	Rabbit IgG
Clonality	Polyclonal
MW	51641
Uniprot ID	O60260
NCBI	NP_054643.2 , NP_004553.2 , NP_054642.2
Dilution Range	WB: 1:250-1:1000, FACS: 1:10-50, IF/ICC: 1:10-50, IHC-P: 1:10-50
Expiration Date	12 months from date of receipt.



WB analysis of s from SH-SY5Y cell line,...



Flow cytometric analysis of NCI-H460 cel...