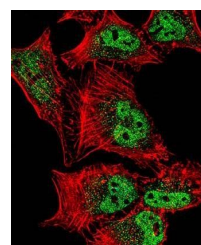
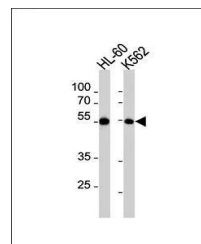


Product Datasheet

MEF2C antibody (orb36465)

Description	Peptide affinity purified rabbit polyclonal antibody.
Species/Host	Rabbit
Reactivity	Human, Mouse
Conjugation	Unconjugated
Tested Applications	IF, IHC-P, WB
Immunogen	Synthetic Peptide
Target	MEF2C
Form/Appearance	Purified polyclonal antibody supplied in PBS with 0.09% (W/V) sodium azide. This antibody is purified through a protein A column, followed by peptide affinity purification.
Storage	Maintain refrigerated at 2-8°C for up to 2 weeks. For long term storage store at -20°C in small aliquots to prevent freeze-thaw cycles
Note	For research use only
Isotype	Rabbit IgG
Clonality	Polyclonal
MW	51221
Uniprot ID	Q06413
NCBI	NP_001180277.1 , NP_002388.2 , NP_001180278.1 , NP_001180276.1 , NP_001180279.1 , NP_001124477.1
Dilution Range	WB: 1:1000, IF/ICC: 1:10-50, IHC-P: 1:10-50
Expiration Date	12 months from date of receipt.



Confocal immunofluorescence analysis of ...



Immunohistochemical analysis of formalin...