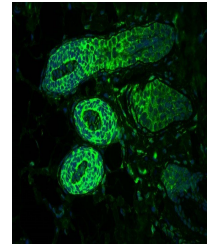


Product Datasheet

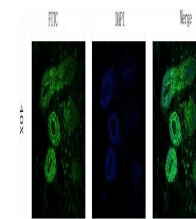
MCP3/CCL7 antibody (FITC) (orb360872)

Description	MCP3/CCL7 antibody (FITC)
Species/Host	Rabbit
Reactivity	Human, Mouse, Rat
Conjugation	FITC
Tested Applications	ICC, IF
Immunogen	Synthetic peptide (please contact us for details)
Target	MCP3/CCL7 (FITC)
Form/Appearance	Liquid: PBS, 2 mM Sodium Azide, 30% glycerol
Concentration	- 100 µg (in 200 µl): 0.5 mg/ml
Storage	Store at 4°C for up to two weeks. For long term storage, aliquot and store at -20°C, avoid freeze/thaw cycles.
Note	For research use only
Isotype	IgG
Clonality	Polyclonal
Purity	Polyclonal antibodies are purified by peptide affinity chromatography
Dilution Range	IF/ICC: 1:30-300
Expiration Date	12 months from date of receipt.



Immunofluorescence analysis of rat skin

...



Immunofluorescence analysis of rat skin

...