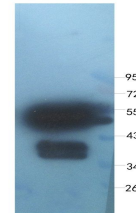


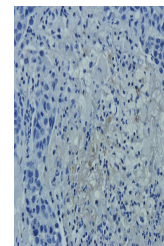
## Product Datasheet

### CLU antibody (orb360771)

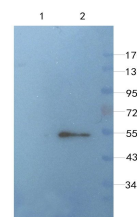
<b>Description</b>	CLU antibody
<b>Species/Host</b>	Mouse
<b>Reactivity</b>	Human, Rat
<b>Conjugation</b>	Unconjugated
<b>Tested Applications</b>	IHC-P, WB
<b>Immunogen</b>	Synthetic peptide (please contact us for details)
<b>Target</b>	CLU
<b>Form/Appearance</b>	10 mM PBS, 0.02% sodium azide
<b>Concentration</b>	- 100 µg (in 200 µl): 0.5 mg/ml- 200 µg (in 400 µl): 0.5 mg/ml
<b>Storage</b>	Store at 4°C for up to two weeks. For long term storage, aliquot and store at -20°C, avoid freeze/thaw cycles.
<b>Note</b>	For research use only
<b>Isotype</b>	IgG
<b>Clonality</b>	Monoclonal
<b>Purity</b>	Monoclonal antibodies are purified by peptide affinity chromatography
<b>MW</b>	52 kDa
<b>Uniprot ID</b>	<a href="#">P05371</a> , <a href="#">P10909</a> , <a href="#">Q06890</a>
<b>NCBI</b>	<a href="#">001822</a> , <a href="#">001831</a>
<b>Entrez</b>	<a href="#">1191</a>
<b>Dilution Range</b>	IHC-P: 1:100-500, WB: 1:100-3000
<b>Expiration Date</b>	12 months from date of receipt.



WB analysis of Clu recombinant protein 1...



IHC-P image of human breast cancer tissu...



WB analysis of Clu recombinant protein 2...