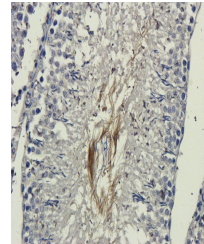


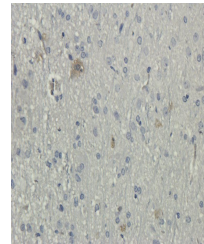
Product Datasheet

DEPDC1 antibody (orb360770)

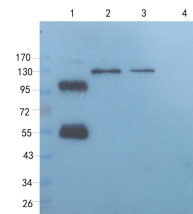
Description	DEPDC1 antibody
Species/Host	Rabbit
Reactivity	Human, Mouse, Rat
Conjugation	Unconjugated
Tested Applications	IHC-P, WB
Immunogen	KLH conjugated synthetic peptide derived from human DEPDC1. Please contact us for the exact immunogen sequence. The peptide is available as orb12932.
Target	DEPDC1
Form/Appearance	10 mM PBS, 0.02% sodium azide
Concentration	- 100 µg (in 200 µl): 0.5 mg/ml- 200 µg (in 400 µl): 0.5 mg/ml
Storage	Store at 4°C for up to two weeks. For long term storage, aliquot and store at -20°C, avoid freeze/thaw cycles.
Note	For research use only
Isotype	IgG
Clonality	Polyclonal
Purity	Polyclonal antibodies are purified by peptide affinity chromatography
MW	93 kDa
Uniprot ID	D3ZGJ9 , Q5TB30
Entrez	55635
Dilution Range	IHC-P: 1:100-500, WB: 1:100-2000
Expiration Date	12 months from date of receipt.



Immunohistochemical staining of rat testis...



IHC-P staining of rat brain tissue using...



Western blot analysis of rat pancreas (I...