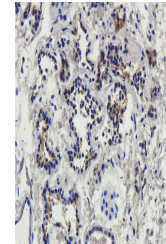


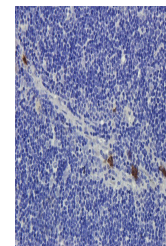
Product Datasheet

IL4 antibody (orb360766)

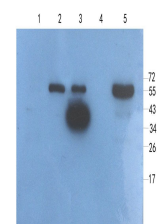
Description	IL4 antibody
Species/Host	Rabbit
Reactivity	Human, Mouse, Rat
Conjugation	Unconjugated
Tested Applications	IHC-P, WB
Immunogen	KLH conjugated synthetic peptide derived from human IL4. Please contact us for the exact immunogen sequence. The peptide is available as orb374976.
Target	IL4
Form/Appearance	10 mM PBS, 0.02% sodium azide
Concentration	- 100 µg (in 200 µl): 0.5 mg/ml- 200 µg (in 400 µl): 0.5 mg/ml
Storage	Store at 4°C for up to two weeks. For long term storage, aliquot and store at -20°C, avoid freeze/thaw cycles.
Note	For research use only
Isotype	IgG
Clonality	Polyclonal
Purity	Polyclonal antibodies are purified by peptide affinity chromatography
MW	17 kDa
Uniprot ID	P20096 , P07750 , P05112
NCBI	000409 , 000418
Entrez	3566
Dilution Range	IHC-P: 1:100-500, WB: 1:100-2000
Expiration Date	12 months from date of receipt.



IHC-P image of human thyroid tumour tiss...



IHC-P staining of rat thymus tissue usin...



Western blot analysis of rat lymph node

...