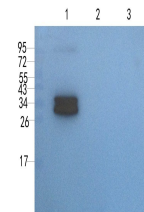


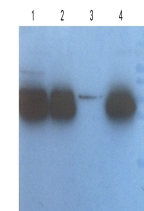
## Product Datasheet

### CXCL13 antibody (orb360765)

<b>Description</b>	CXCL13 antibody
<b>Species/Host</b>	Rabbit
<b>Reactivity</b>	Human, Mouse, Rat
<b>Conjugation</b>	Unconjugated
<b>Tested Applications</b>	WB
<b>Immunogen</b>	KLH conjugated synthetic peptide derived from human CXCL13. Please contact us for the exact immunogen sequence. The peptide is available as orb374975.
<b>Target</b>	CXCL13
<b>Form/Appearance</b>	10 mM PBS, 0.02% sodium azide
<b>Concentration</b>	- 100 µg (in 200 µl): 0.5 mg/ml- 200 µg (in 400 µl): 0.5 mg/ml
<b>Storage</b>	Store at 4°C for up to two weeks. For long term storage, aliquot and store at -20°C, avoid freeze/thaw cycles.
<b>Note</b>	For research use only
<b>Isotype</b>	IgG
<b>Clonality</b>	Polyclonal
<b>Purity</b>	Polyclonal antibodies are purified by peptide affinity chromatography
<b>MW</b>	13 kDa
<b>Uniprot ID</b>	<b>O43927, O55038, F7F7W7</b>
<b>Entrez</b>	<b>10563</b>
<b>Dilution Range</b>	WB: 1:100-2000
<b>Expiration Date</b>	12 months from date of receipt.



Western blot analysis of mouse liver (lane 1).



WB analysis of mouse stomach (lane 1), r...