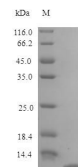


## Product Datasheet

### Rat CCL7 protein (Active) (orb359136)

|                          |   |
|--------------------------|---|
| <b>Description</b>       | Recombinant rat CCL7 active protein   |
| <b>Endotoxins</b>        | Less than 1.0 EU/μg as determined by LAL method.  |
| <b>Preservatives</b>     | Lyophilized from a 0.2 μm filtered PBS, pH 7.4  |
| <b>Form/Appearance</b>   | Lyophilized powder  |
| <b>Storage</b>           | The shelf life is related to many factors, storage state, buffer ingredients, storage temperature and the stability of the protein itself. Generally, the shelf life of liquid form is 6 months at -20°C/-80°C. The shelf life of lyophilized form is 12 months at -20°C/-80°C.   |
| <b>Tag</b>               | Tag-Free  |
| <b>Note</b>              | For research use only   |
| <b>Application notes</b> | We recommend that this vial be briefly centrifuged prior to opening to bring the contents to the bottom. Please reconstitute protein in deionized sterile water to a concentration of 0.1-1.0 mg/mL. We recommend to add 5-50% of glycerol (final concentration) and aliquot for long-term storage at -20°C/-80°C. Our default final concentration of glycerol is 50%. Customers could use it as reference. |
| <b>Protein Sequence</b>  | QPDG TNSSTCCYVKKQKIPKRNLSYRKITSSRCPWEAVIFKTKKGMVCAEAHQ<br>KWVEEAIAYLDMKTSTPKP   |
| <b>Purity</b>            | > 95% as determined by SDS-PAGE and HPLC.   |
| <b>Source</b>            | E.Coli  |
| <b>MW</b>                | 8.5 kDa   |
| <b>Uniprot ID</b>        | <b>Q9QXY8</b>   |
| <b>Expiration Date</b>   | 6 months from date of receipt.  |



SDS-PAGE analysis of Rat CCL7 protein (A...

