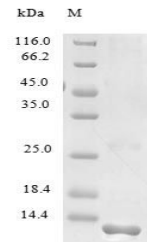


## Product Datasheet

### Human CCL23 protein (Active) (orb359080)

<b>Description</b>	Recombinant human CCL23 active protein
<b>Endotoxins</b>	Less than 1.0 EU/μg as determined by LAL method.
<b>Preservatives</b>	Lyophilized from a 0.2 μm filtered PBS, pH 7.4
<b>Form/Appearance</b>	Lyophilized powder
<b>Storage</b>	The shelf life is related to many factors, storage state, buffer ingredients, storage temperature and the stability of the protein itself. Generally, the shelf life of liquid form is 6 months at -20°C/-80°C. The shelf life of lyophilized form is 12 months at -20°C/-80°C.
<b>Tag</b>	Tag-Free
<b>Note</b>	For research use only
<b>Application notes</b>	We recommend that this vial be briefly centrifuged prior to opening to bring the contents to the bottom. Please reconstitute protein in deionized sterile water to a concentration of 0.1-1.0 mg/mL. We recommend to add 5-50% of glycerol (final concentration) and aliquot for long-term storage at -20°C/-80°C. Our default final concentration of glycerol is 50%. Customers could use it as reference.
<b>Protein Sequence</b>	RVTKDAETEFMMSKLPLENPVLLDRFHATSADCCISYTPRSIPCSLLESYFETNSE CSKPGVIFLTKKGRRFCANPSDKQVQVCMRMLKLDTRIKTRKN
<b>Purity</b>	> 97% as determined by SDS-PAGE and HPLC.
<b>Source</b>	E.Coli
<b>MW</b>	11.4 kDa
<b>Uniprot ID</b>	<b>P55773</b>
<b>Expiration Date</b>	6 months from date of receipt.



SDS-PAGE analysis of Human CCL23 protein...

