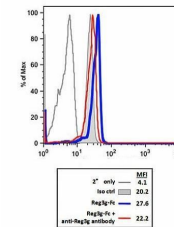
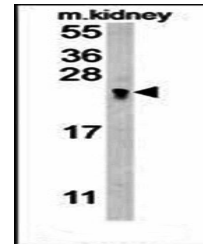


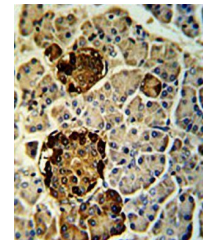
## Product Datasheet

### REG3G antibody (orb35898)

|                            |   |
|----------------------------|---|
| <b>Description</b>         | Rabbit polyclonal antibody to REG3G first isolated from a regenerating islet cDNA library, encodes a...   |
| <b>Species/Host</b>        | Rabbit  |
| <b>Reactivity</b>          | Human   |
| <b>Conjugation</b>         | Unconjugated  |
| <b>Tested Applications</b> | FC, IHC-P, WB   |
| <b>Immunogen</b>           | Synthetic Peptide   |
| <b>Target</b>              | REG3G   |
| <b>Form/Appearance</b>     | Purified polyclonal antibody supplied in PBS with 0.09% (W/V) sodium azide. This antibody is prepared by Saturated Ammonium Sulfate (SAS) precipitation followed by dialysis against PBS. |
| <b>Storage</b>             | Maintain refrigerated at 2-8°C for up to 2 weeks. For long term storage store at -20°C in small aliquots to prevent freeze-thaw cycles  |
| <b>Note</b>                | For research use only   |
| <b>Isotype</b>             | Rabbit IgG  |
| <b>Clonality</b>           | Polyclonal  |
| <b>MW</b>                  | 19330   |
| <b>Uniprot ID</b>          | <a href="#">Q6UW15</a>  |
| <b>NCBI</b>                | <a href="#">NP_001256969.1</a> , <a href="#">NP_940850.1</a> , <a href="#">NP_001008388.1</a>   |
| <b>Dilution Range</b>      | IHC-P: 1:50-100, WB: 1:1000, FACS: 1:10-50  |
| <b>Expiration Date</b>     | 12 months from date of receipt.   |



Flow cytometric analysis of REG3G bindin...



Immunohistochemical analysis of formalin...