

Product Datasheet

STEAP2 antibody (orb35876)

Description Peptide affinity purified rabbit polyclonal antibody.

Species/Host Rabbit

Reactivity Human, Mouse

Conjugation Unconjugated

Tested Applications FC, IHC-P, WB

Immunogen Synthetic Peptide

Target STEAP2

Form/Appearance Purified polyclonal antibody supplied in PBS with 0.09% (W/V) sodium azide. This antibody is purified through a protein A column, followed by peptide affinity purification.

Storage Maintain refrigerated at 2-8°C for up to 2 weeks. For long term storage store at -20°C in small aliquots to prevent freeze-thaw cycles

Note For research use only

Isotype Rabbit IgG

Clonality Polyclonal

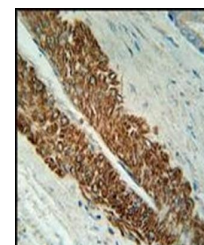
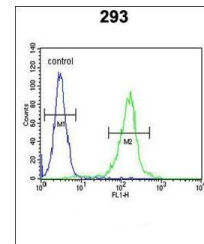
MW 56056

Uniprot ID [Q8NFT2](#)

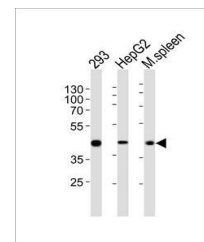
NCBI [NP_001231873.1](#), [NP_001035755.1](#), [NP_001035756.1](#), [NP_694544.2](#), [NP_001231875.1](#)

Dilution Range WB: 1:1000, IHC-P: 1:50-100, FACS: 1:10-50

Expiration Date 12 months from date of receipt.



Immunohistochemical staining of paraffin...



Western blot analysis of 293, HepG2 cell...