

Product Datasheet

Mouse Ccr5 protein (orb358231)

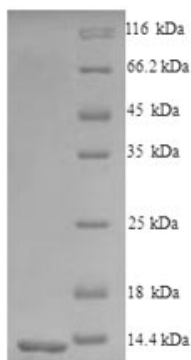
Description	Recombinant mouse Ccr5 protein
Endotoxins	Not test.
Preservatives	If the delivery form is liquid, the default storage buffer is Tris/PBS-based buffer, 5%-50% glycerol. If the delivery form is lyophilized powder, the buffer before lyophilization is Tris/PBS-based buffer, 6% Trehalose, pH 8.0.
Form/Appearance	Liquid or Lyophilized powder
Storage	The shelf life is related to many factors, storage state, buffer ingredients, storage temperature and the stability of the protein itself. Generally, the shelf life of liquid form is 6 months at -20°C/-80°C. The shelf life of lyophilized form is 12 months at -20°C/-80°C.
Tag	N-terminal 6xHis-tagged
Note	For research use only
Application notes	This is His-tag protein
Protein Sequence	QEFFGLNNCSSSNRLDQAMQATETLGMTHCCLNPVIYAFVGEKFRSYLSVFFRKHMVKRFC KRCSIFQQDNPDRASSVYTRSTGEHEVSTGL
Purity	Greater than 90% as determined by SDS-PAGE.
Source	Yeast
MW	12.6 kDa
Uniprot ID	P51682
Expiration Date	6 months from date of receipt.

Biorbyt Ltd.

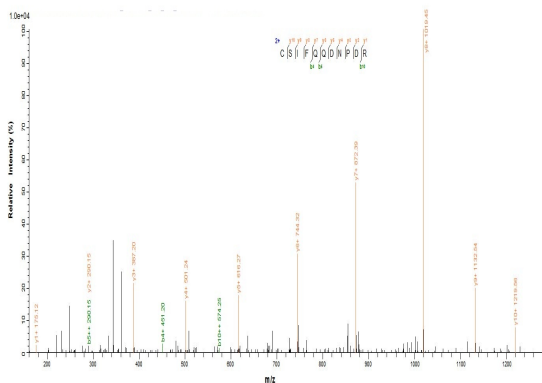
7 Signet Court, Swann's Road,
Cambridge, CB5 8LA, United Kingdom
Email: info@biorbyt.com, support@biorbyt.com
Phone: [+44 \(0\) 1223 859-353](tel:+44(0)1223859353) | Fax: [+1 \(415\) 651-8558](tel:+1(415)6518558)

Biorbyt LLC.

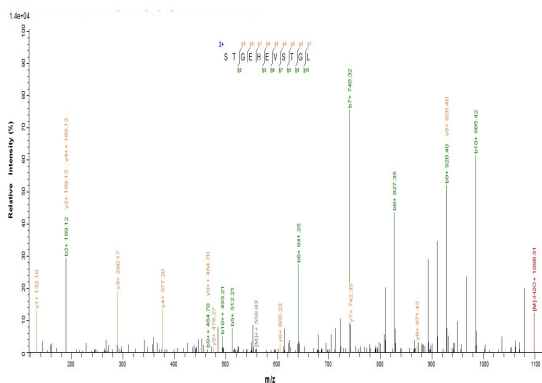
68 TW Alexander Drive,
Durham, NC, 27713, United States
Email: info@biorbyt.com, support@biorbyt.com
Phone: [+1 \(415\) 906-5211](tel:+1(415)9065211) | Fax: [+1 \(415\) 651-8558](tel:+1(415)6518558)



(Tris-Glycine gel) Discontinuous SDS-PAGE (reduced) with 5% enrichment gel and 15% separation gel.



Based on the SEQUEST from database of Yeast host and target protein, the LC-MS/MS Analysis result could indicate that this peptide derived from Yeast-expressed Mus musculus (Mouse) Ccr5.



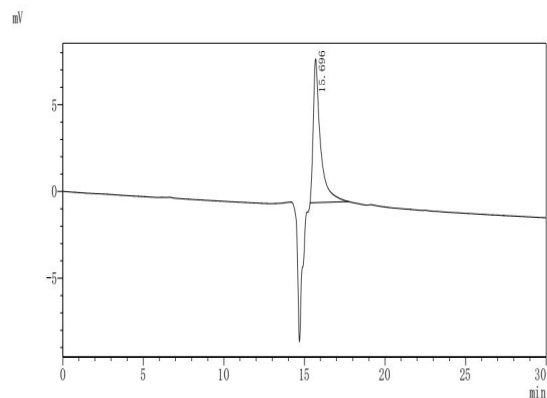
Based on the SEQUEST from database of Yeast host and target protein, the LC-MS/MS Analysis result could indicate that this peptide derived from Yeast-expressed Mus musculus (Mouse) Ccr5.

Biorbyt Ltd.

7 Signet Court, Swann's Road,
Cambridge, CB5 8LA, United Kingdom
Email: info@biorbyt.com, support@biorbyt.com
Phone: [+44 \(0\) 1223 859-353](tel:+44(0)1223859353) | Fax: [+1 \(415\) 651-8558](tel:+1(415)6518558)

Biorbyt LLC.

68 TW Alexander Drive,
Durham, NC, 27713, United States
Email: info@biorbyt.com, support@biorbyt.com
Phone: [+1 \(415\) 906-5211](tel:+1(415)9065211) | Fax: [+1 \(415\) 651-8558](tel:+1(415)6518558)



The purity of Ccr5 was greater than 95% as determined by SEC-HPLC

Biorbyt Ltd.

7 Signet Court, Swann's Road,
Cambridge, CB5 8LA, United Kingdom

Email: info@biorbyt.com, support@biorbyt.com

Phone: [+44 \(0\) 1223 859-353](tel:+44(0)1223859353) | Fax: [+1 \(415\) 651-8558](tel:+1(415)6518558)

Biorbyt LLC.

68 TW Alexander Drive,
Durham, NC, 27713, United States

Email: info@biorbyt.com, support@biorbyt.com

Phone: [+1 \(415\) 906-5211](tel:+1(415)9065211) | Fax: [+1 \(415\) 651-8558](tel:+1(415)6518558)