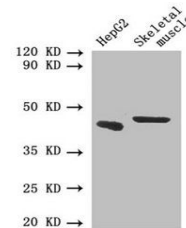


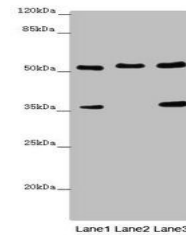
Product Datasheet

SMAD1 antibody (orb356835)

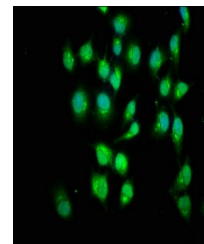
Description	SMAD1 antibody
Species/Host	Rabbit
Reactivity	Human
Conjugation	Unconjugated
Tested Applications	ELISA, IF, IHC, WB
Immunogen	Recombinant Human Mothers against decapentaplegic homolog 1 protein (202-335AA)
Target	SMAD1
Preservatives	Preservative: 0.03% Proclin 300. Constituents: 50% Glycerol
Form/Appearance	Liquid
Storage	Maintain refrigerated at 2-8°C for up to 2 weeks. For long term storage store at -20°C in small aliquots to prevent freeze-thaw cycles.
Note	For research use only
Isotype	IgG
Clonality	Polyclonal
Uniprot ID	Q15797
Dilution Range	WB:1:1000-5000, IHC-P:1:20-600, IF:1:50-200
Expiration Date	12 months from date of receipt.



Western blot analysis of HepG-2 whole ce...



Western blot analysis of Jurkat(lane 1),...



Immunofluorescence analysis of HeLa cell...