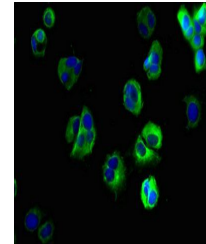


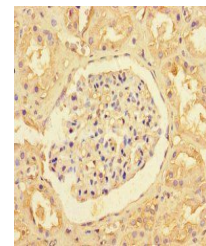
Product Datasheet

SLC35F6 antibody (orb356791)

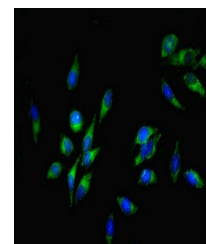
Description	SLC35F6 antibody
Species/Host	Rabbit
Reactivity	Human
Conjugation	Unconjugated
Tested Applications	ELISA, IF, IHC
Immunogen	Recombinant Human Solute carrier family 35 member F6 protein (337-371AA)
Target	SLC35F6
Preservatives	Preservative: 0.03% Proclin 300. Constituents: 50% Glycerol
Form/Appearance	Liquid
Storage	Maintain refrigerated at 2-8°C for up to 2 weeks. For long term storage store at -20°C in small aliquots to prevent freeze-thaw cycles.
Note	For research use only
Isotype	IgG
Clonality	Polyclonal
Uniprot ID	Q8N357
Dilution Range	IHC-P:1:20-1:200, IF:1:50-1:200
Expiration Date	12 months from date of receipt.



Immunofluorescence analysis of MCF-7 cel...



Immunohistochemical staining of human ki...



Immunofluorescence analysis of HeLa cell...