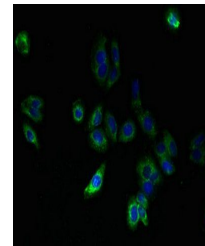


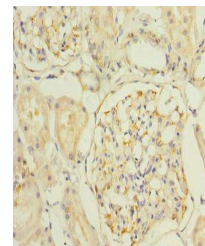
Product Datasheet

SLC25A33 antibody (orb356751)

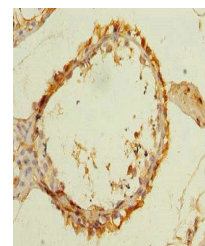
Description	SLC25A33 antibody
Species/Host	Rabbit
Reactivity	Human
Conjugation	Unconjugated
Tested Applications	ELISA, IF, IHC
Immunogen	Recombinant Human Solute carrier family 25 member 33 protein (66-120AA)
Target	SLC25A33
Preservatives	Preservative: 0.03% Proclin 300. Constituents: 50% Glycerol
Form/Appearance	Liquid
Storage	Maintain refrigerated at 2-8°C for up to 2 weeks. For long term storage store at -20°C in small aliquots to prevent freeze-thaw cycles.
Note	For research use only
Isotype	IgG
Clonality	Polyclonal
Uniprot ID	Q9BSK2
Dilution Range	IHC-P:1:20-1:200
Expiration Date	12 months from date of receipt.



Immunofluorescence analysis of HepG2 cel...



Immunohistochemical staining of human ki...



Immunohistochemical staining of human te...