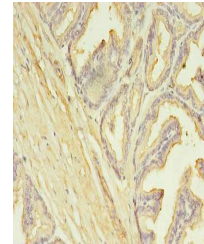


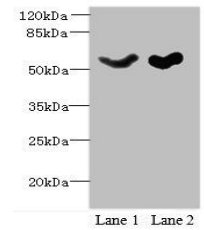
Product Datasheet

SLC25A25 antibody (orb356743)

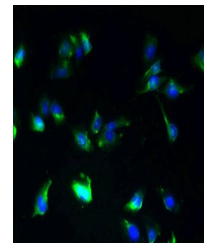
Description	SLC25A25 antibody
Species/Host	Rabbit
Reactivity	Human, Mouse
Conjugation	Unconjugated
Tested Applications	ELISA, IF, IHC, WB
Immunogen	Recombinant Human Calcium-binding mitochondrial carrier protein SCaMC-2 protein (1-189AA)
Target	SLC25A25
Preservatives	Preservative: 0.03% Proclin 300. Constituents: 50% Glycerol
Form/Appearance	Liquid
Storage	Maintain refrigerated at 2-8°C for up to 2 weeks. For long term storage store at -20°C in small aliquots to prevent freeze-thaw cycles.
Note	For research use only
Isotype	IgG
Clonality	Polyclonal
Uniprot ID	Q6KCM7
Dilution Range	WB:1:500-2000, IHC-P:1:20-1:200
Expiration Date	12 months from date of receipt.



Immunohistochemistry of paraffin-embedde...



Western blot analysis of Mouse liver ti...



Immunofluorescent analysis of U251 cells...