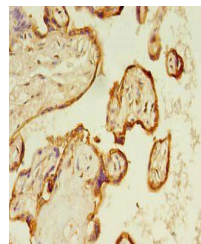


## Product Datasheet

### S100A11 antibody (orb356559)

<b>Description</b>	S100A11 antibody
<b>Species/Host</b>	Rabbit
<b>Reactivity</b>	Human
<b>Conjugation</b>	Unconjugated
<b>Tested Applications</b>	ELISA, IHC
<b>Immunogen</b>	Recombinant Human Protein S100-A11 protein (2-105AA)
<b>Target</b>	S100A11
<b>Preservatives</b>	Preservative: 0.03% Proclin 300. Constituents: 50% Glycerol
<b>Form/Appearance</b>	Liquid
<b>Storage</b>	Upon receipt, store at -20°C or -80°C. Avoid repeated freeze.
<b>Note</b>	For research use only
<b>Isotype</b>	IgG
<b>Clonality</b>	Polyclonal
<b>Uniprot ID</b>	<b>P31949</b>
<b>Dilution Range</b>	IHC-P:1:20-200
<b>Expiration Date</b>	12 months from date of receipt.



Immunohistochemical staining of human pl...