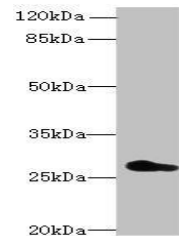


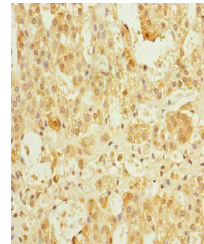
Product Datasheet

REEP4 antibody (orb356375)

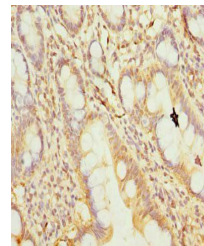
Description	REEP4 antibody
Species/Host	Rabbit
Reactivity	Human
Conjugation	Unconjugated
Tested Applications	ELISA, IF, IHC, WB
Immunogen	Recombinant Human Receptor expression-enhancing protein 4 protein (78-257AA)
Target	REEP4
Preservatives	Preservative: 0.03% Proclin 300. Constituents: 50% Glycerol
Form/Appearance	Liquid
Storage	Maintain refrigerated at 2-8°C for up to 2 weeks. For long term storage store at -20°C in small aliquots to prevent freeze-thaw cycles.
Note	For research use only
Isotype	IgG
Clonality	Polyclonal
Uniprot ID	Q9H6H4
Dilution Range	WB:1:500-2000, IHC-P:1:20-1:200
Expiration Date	12 months from date of receipt.



Western blot analysis of U251 whole cell...



Immunohistochemical staining of human ad...



Immunohistochemical staining of human sm...