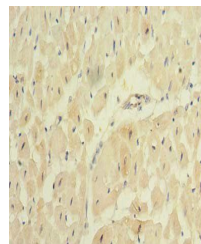


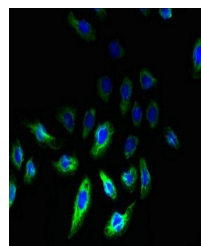
Product Datasheet

REEP2 antibody (orb356371)

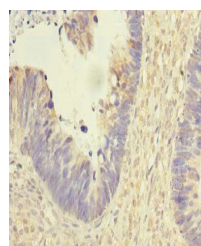
| | |
|----------------------------|---|
| Description | REEP2 antibody |
| Species/Host | Rabbit |
| Reactivity | Human |
| Conjugation | Unconjugated |
| Tested Applications | ELISA, IF, IHC |
| Immunogen | Recombinant Human Receptor expression-enhancing protein 2 protein (78-252AA) |
| Target | REEP2 |
| Preservatives | Preservative: 0.03% Proclin 300. Constituents: 50% Glycerol |
| Form/Appearance | Liquid |
| Storage | Maintain refrigerated at 2-8°C for up to 2 weeks. For long term storage store at -20°C in small aliquots to prevent freeze-thaw cycles. |
| Note | For research use only |
| Isotype | IgG |
| Clonality | Polyclonal |
| Uniprot ID | Q9BRK0 |
| Dilution Range | IHC-P:1:20-1:200 |
| Expiration Date | 12 months from date of receipt. |



Immunohistochemistry of paraffin-embedde...



Immunofluorescent analysis of A549 cells...



Immunohistochemistry of paraffin-embedde...