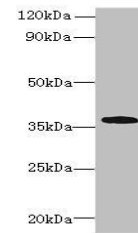


Product Datasheet

PRPSAP1 antibody (orb356231)

Description	PRPSAP1 antibody
Species/Host	Rabbit
Reactivity	Human
Conjugation	Unconjugated
Tested Applications	ELISA, WB
Immunogen	Recombinant Human Phosphoribosyl pyrophosphate synthase-associated protein 1 protein (1-240AA)
Target	PRPSAP1
Preservatives	Preservative: 0.03% Proclin 300. Constituents: 50% Glycerol
Form/Appearance	Liquid
Storage	Maintain refrigerated at 2-8°C for up to 2 weeks. For long term storage store at -20°C in small aliquots to prevent freeze-thaw cycles.
Note	For research use only
Isotype	IgG
Clonality	Polyclonal
Uniprot ID	Q14558
Dilution Range	WB:1:500-2000
Expiration Date	12 months from date of receipt.



Western blot analysis of HeLa whole cell...