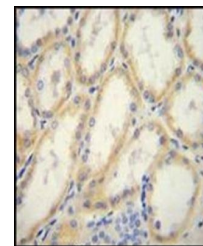
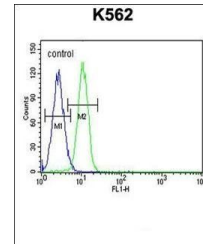


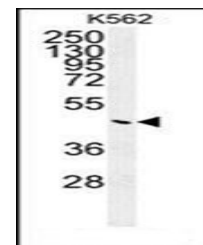
Product Datasheet

G6PC antibody (orb35521)

Description	Peptide affinity purified rabbit polyclonal antibody.
Species/Host	Rabbit
Reactivity	Human
Conjugation	Unconjugated
Tested Applications	FC, IHC-P, WB
Immunogen	This G6PC antibody is generated from rabbits immunized with a KLH conjugated synthetic peptide between 123-149 amino acids from the Central region of human G6PC
Target	G6PC1
Form/Appearance	Purified polyclonal antibody supplied in PBS with 0.09% (W/V) sodium azide
Storage	Maintain refrigerated at 2-8°C for up to 2 weeks. For long term storage store at -20°C in small aliquots to prevent freeze-thaw cycles
Note	For research use only
Isotype	Rabbit IgG
Clonality	Polyclonal
Purity	This antibody is purified through a protein A column, followed by peptide affinity purification
MW	40,484 Da (Predicted band size : 40 kDa)
Uniprot ID	P35575
NCBI	NP_000142.2 , NP_001257326.1
Dilution Range	WB: 1:1000, IHC-P: 1:50-100, FACS: 1:10-50
Expiration Date	12 months from date of receipt.



Immunohistochemical staining of paraffin...



Western blot analysis of in K562 cell li...