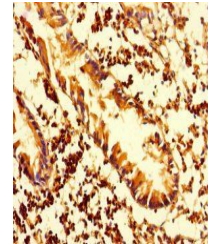


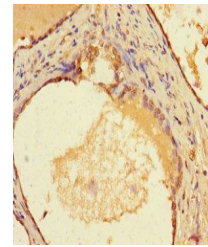
## Product Datasheet

### HLA-DMA antibody (orb355187)

|                            |                                                                                                                                         |
|----------------------------|-----------------------------------------------------------------------------------------------------------------------------------------|
| <b>Description</b>         | HLA-DMA antibody                                                                                                                        |
| <b>Species/Host</b>        | Rabbit                                                                                                                                  |
| <b>Reactivity</b>          | Human                                                                                                                                   |
| <b>Conjugation</b>         | Unconjugated                                                                                                                            |
| <b>Tested Applications</b> | ELISA, IHC                                                                                                                              |
| <b>Immunogen</b>           | Recombinant Human HLA class II histocompatibility antigen, DM alpha chain protein (27-233AA)                                            |
| <b>Target</b>              | HLA-DMA                                                                                                                                 |
| <b>Preservatives</b>       | Preservative: 0.03% Proclin 300. Constituents: 50% Glycerol                                                                             |
| <b>Form/Appearance</b>     | Liquid                                                                                                                                  |
| <b>Storage</b>             | Maintain refrigerated at 2-8°C for up to 2 weeks. For long term storage store at -20°C in small aliquots to prevent freeze-thaw cycles. |
| <b>Note</b>                | For research use only                                                                                                                   |
| <b>Isotype</b>             | IgG                                                                                                                                     |
| <b>Clonality</b>           | Polyclonal                                                                                                                              |
| <b>Uniprot ID</b>          | <b>P28067</b>                                                                                                                           |
| <b>Dilution Range</b>      | IHC-P:1:20-200                                                                                                                          |
| <b>Expiration Date</b>     | 12 months from date of receipt.                                                                                                         |



Immunohistochemical staining of human ap...



Immunohistochemical staining of human pr...