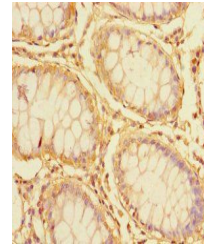


Product Datasheet

ATP1B3 antibody (orb354011)

Description	ATP1B3 antibody
Species/Host	Rabbit
Reactivity	Human
Conjugation	Unconjugated
Tested Applications	ELISA, IF, IHC
Immunogen	Recombinant Human Sodium/potassium-transporting ATPase subunit beta-3 protein (57-279AA)
Target	vapC
Preservatives	Preservative: 0.03% Proclin 300. Constituents: 50% Glycerol
Form/Appearance	Liquid
Storage	Maintain refrigerated at 2-8°C for up to 2 weeks. For long term storage store at -20°C in small aliquots to prevent freeze-thaw cycles.
Note	For research use only
Isotype	IgG
Clonality	Polyclonal
Uniprot ID	P54709
Dilution Range	IHC-P:1:20-200
Expiration Date	12 months from date of receipt.



Immunohistochemical staining of human co...