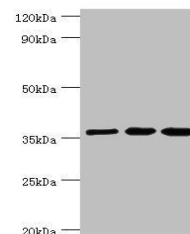


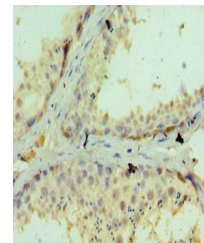
Product Datasheet

GLRX3 antibody (orb353659)

Description	GLRX3 antibody
Species/Host	Rabbit
Reactivity	Human, Rat
Conjugation	Unconjugated
Tested Applications	ELISA, IHC, IP, WB
Immunogen	Recombinant Human Glutaredoxin-3 protein (1-335AA)
Target	GLRX3
Preservatives	PBS with 0.02% sodium azide, 50% glycerol, pH7.3.
Form/Appearance	Liquid
Storage	Maintain refrigerated at 2-8°C for up to 2 weeks. For long term storage store at -20°C in small aliquots to prevent freeze-thaw cycles.
Note	For research use only
Isotype	IgG
Clonality	Polyclonal
Uniprot ID	076003
Dilution Range	WB:1:500-5000, IHC-P:1:20-1:200
Expiration Date	12 months from date of receipt.



Western blot analysis of rat brain tissue...



Immunohistochemical staining of human tissue...