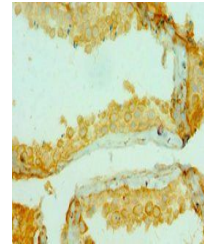


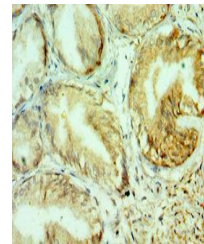
Product Datasheet

COL10A1 antibody (orb353639)

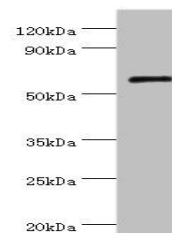
| | |
|----------------------------|---|
| Description | COL10A1 antibody |
| Species/Host | Rabbit |
| Reactivity | Human |
| Conjugation | Unconjugated |
| Tested Applications | ELISA, IHC, WB |
| Immunogen | Recombinant Human Collagen alpha-1(X) chain protein (521-680AA) |
| Target | COL10A1 |
| Preservatives | PBS with 0.02% sodium azide, 50% glycerol, pH7.3. |
| Form/Appearance | Liquid |
| Storage | Upon receipt, store at -20°C or -80°C. Avoid repeated freeze. |
| Note | For research use only |
| Isotype | IgG |
| Clonality | Polyclonal |
| Uniprot ID | Q03692 |
| Dilution Range | WB:1:500-2000, IHC-P:1:20-1:200 |
| Expiration Date | 12 months from date of receipt. |



Immunohistochemical staining of human te...



Immunohistochemical staining of human pr...



Western blot analysis of K562 whole cell...