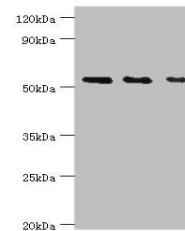


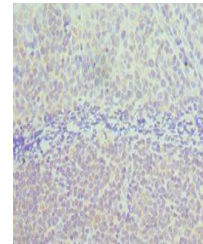
Product Datasheet

TAB1 antibody (orb353529)

Description	TAB1 antibody
Species/Host	Rabbit
Reactivity	Human, Mouse
Conjugation	Unconjugated
Tested Applications	ELISA, IHC, WB
Immunogen	Recombinant Human TGF-beta-activated kinase 1 and MAP3K7-binding protein 1 protein (205-504AA)
Target	TAB1
Preservatives	PBS with 0.02% sodium azide, 50% glycerol, pH7.3.
Form/Appearance	Liquid
Storage	Upon receipt, store at -20°C or -80°C. Avoid repeated freeze.
Note	For research use only
Isotype	IgG
Clonality	Polyclonal
Uniprot ID	Q15750
Dilution Range	WB:1:500-2000, IHC-P:1:20-1:200
Expiration Date	12 months from date of receipt.



Western blot analysis of K562(lane 1), H...



Immunohistochemical staining of human to...