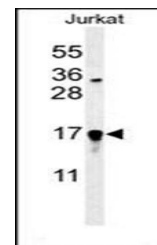
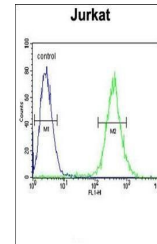


Product Datasheet

GLRX5 antibody (orb35329)

Description	Rabbit polyclonal antibody to GLRX5. The protein encodes a mitochondrial protein, which is evolution...
Species/Host	Rabbit
Reactivity	Human
Conjugation	Unconjugated
Tested Applications	FC, WB
Immunogen	Synthetic Peptide
Target	GLRX5
Form/Appearance	Purified polyclonal antibody supplied in PBS with 0.09% (W/V) sodium azide. This antibody is purified through a protein A column, followed by peptide affinity purification.
Storage	Maintain refrigerated at 2-8°C for up to 2 weeks. For long term storage store at -20°C in small aliquots to prevent freeze-thaw cycles
Note	For research use only
Isotype	Rabbit IgG
Clonality	Polyclonal
MW	16628
Uniprot ID	Q86SX6
NCBI	NP_057501.2
Dilution Range	WB: 1:1000, FACS: 1:10-50
Expiration Date	12 months from date of receipt.



Western blot analysis of in Jurkat cell ...