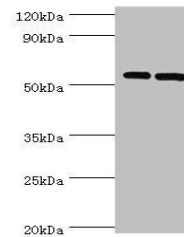


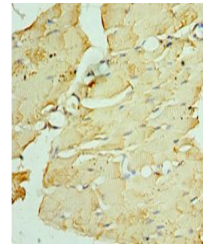
Product Datasheet

PNPLA2 antibody (orb353275)

Description	PNPLA2 antibody
Species/Host	Rabbit
Reactivity	Human
Conjugation	Unconjugated
Tested Applications	ELISA, IHC, WB
Immunogen	Recombinant Human Patatin-like phospholipase domain-containing protein 2 protein (265-504AA)
Target	PNPLA2
Preservatives	PBS with 0.02% sodium azide, 50% glycerol, pH7.3.
Form/Appearance	Liquid
Storage	Upon receipt, store at -20°C or -80°C. Avoid repeated freeze.
Note	For research use only
Isotype	IgG
Clonality	Polyclonal
Uniprot ID	Q96AD5
Dilution Range	WB:1:200-1000, IHC-P:1:20-1:200
Expiration Date	12 months from date of receipt.



Western blot analysis of A431(lane 1), H...



Immunohistochemical staining of human sk...