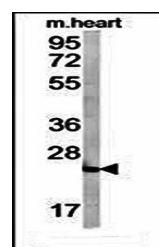
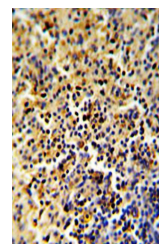


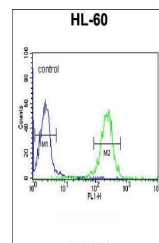
Product Datasheet

FOLR2 antibody (orb35326)

Description	Rabbit polyclonal antibody to FOLR2 (Folate receptor beta) binds to folate and reduced folic acid de...
Species/Host	Rabbit
Reactivity	Human, Mouse
Conjugation	Unconjugated
Tested Applications	FC, IHC-P, WB
Immunogen	Synthetic Peptide
Target	FOLR2
Form/Appearance	Purified polyclonal antibody supplied in PBS with 0.09% (W/V) sodium azide. This antibody is purified through a protein A column, followed by peptide affinity purification.
Storage	Maintain refrigerated at 2-8°C for up to 2 weeks. For long term storage store at -20°C in small aliquots to prevent freeze-thaw cycles
Note	For research use only
Isotype	Rabbit IgG
Clonality	Polyclonal
MW	29280
Uniprot ID	P14207
NCBI	NP_001107007.1 , NP_001107006.1 , NP_000794.3 , NP_001107008.1
Dilution Range	WB: 1:1000, IHC-P: 1:10-50, FACS: 1:10-50
Expiration Date	12 months from date of receipt.



Western blot analysis of mouse heart tis...



Flow cytometric analysis of HL-60 cells ...