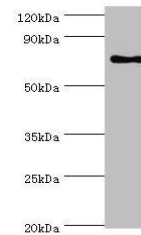


Product Datasheet

SLC27A6 antibody (orb352613)

Description	SLC27A6 antibody
Species/Host	Rabbit
Reactivity	Human
Conjugation	Unconjugated
Tested Applications	ELISA, WB
Immunogen	Recombinant Human Long-chain fatty acid transport protein 6 protein (370-619AA)
Target	SLC27A6
Preservatives	PBS with 0.02% sodium azide, 50% glycerol, pH7.3.
Form/Appearance	Liquid
Storage	Upon receipt, store at -20°C or -80°C. Avoid repeated freeze.
Note	For research use only
Isotype	IgG
Clonality	Polyclonal
Uniprot ID	Q9Y2P4
Dilution Range	WB:1:500-5000
Expiration Date	12 months from date of receipt.



Western blot analysis of MCF-7 whole cel...