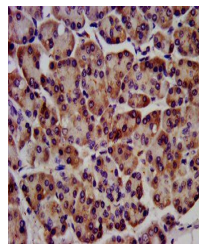


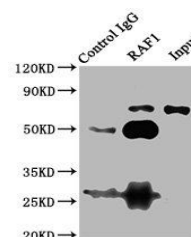
Product Datasheet

RAF1 antibody (orb352133)

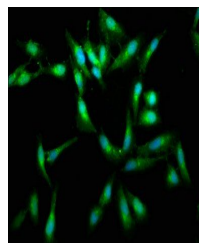
Description	RAF1 antibody
Species/Host	Rabbit
Reactivity	Human
Conjugation	Unconjugated
Tested Applications	ELISA, IF, IHC, IP, WB
Immunogen	Recombinant Human RAF proto-oncogene serine/threonine-protein kinase protein (1-648AA)
Target	RAF1
Preservatives	Preservative: 0.03% Proclin 300. Constituents: 50% Glycerol
Form/Appearance	Liquid
Storage	Upon receipt, store at -20°C or -80°C. Avoid repeated freeze.
Note	For research use only
Isotype	IgG
Clonality	Polyclonal
Uniprot ID	P04049
Dilution Range	IHC-P:1:1000-2000, IF:1:50-500, IP:1:200-2000
Expiration Date	12 months from date of receipt.



Immunohistochemistry of paraffin-embedde...



Immunoprecipitation analysis of 293T who...



Immunofluorescence staining of HeLa cell...