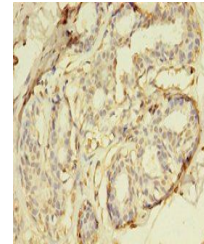


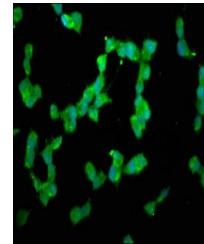
Product Datasheet

DUSP26 antibody (orb351445)

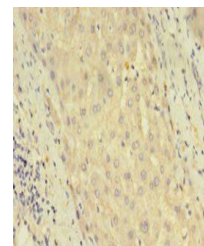
Description	DUSP26 antibody
Species/Host	Rabbit
Reactivity	Human
Conjugation	Unconjugated
Tested Applications	ELISA, IF, IHC
Immunogen	Recombinant Human Dual specificity protein phosphatase 26 protein (1-211AA)
Target	DUSP26
Preservatives	Preservative: 0.03% Proclin 300. Constituents: 50% Glycerol
Form/Appearance	Liquid
Storage	Maintain refrigerated at 2-8°C for up to 2 weeks. For long term storage store at -20°C in small aliquots to prevent freeze-thaw cycles.
Note	For research use only
Isotype	IgG
Clonality	Polyclonal
Uniprot ID	Q9BV47
Dilution Range	IHC-P:1:20-1:200, IF:1:50-1:500
Expiration Date	12 months from date of receipt.



Immunohistochemistry of paraffin-embedde...



Immunofluorescence staining of SH-SY5Y C...



Immunohistochemistry of paraffin-embedde...