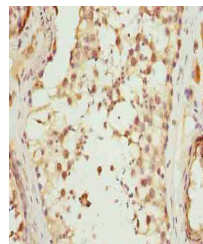


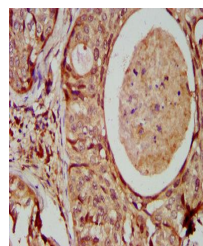
Product Datasheet

MAD2L1 antibody (orb351125)

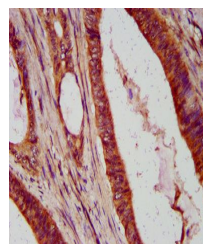
Description	MAD2L1 antibody
Species/Host	Rabbit
Reactivity	Human
Conjugation	Unconjugated
Tested Applications	ELISA, IHC
Immunogen	Recombinant Human Mitotic spindle assembly checkpoint protein MAD2A protein (2-205AA)
Target	MAD2L1
Preservatives	Preservative: 0.03% Proclin 300. Constituents: 50% Glycerol
Form/Appearance	Liquid
Storage	Maintain refrigerated at 2-8°C for up to 2 weeks. For long term storage store at -20°C in small aliquots to prevent freeze-thaw cycles.
Note	For research use only
Isotype	IgG
Clonality	Polyclonal
Uniprot ID	Q13257
Dilution Range	IHC-P:1:200-1:500
Expiration Date	12 months from date of receipt.



Immunohistochemical staining of human te...



Immunohistochemical staining of human ce...



Immunohistochemical staining of human CO...