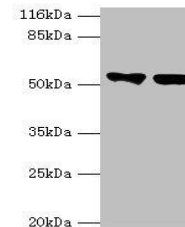


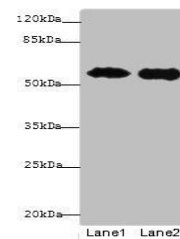
Product Datasheet

KRT8 antibody (orb350880)

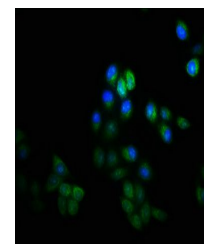
Description	KRT8 antibody
Species/Host	Rabbit
Reactivity	Human
Conjugation	Unconjugated
Tested Applications	ELISA, IF, IHC, WB
Immunogen	Recombinant Human Keratin, type II cytoskeletal 8 protein (2-483AA)
Target	KRT8
Preservatives	Preservative: 0.03% Proclin 300. Constituents: 50% Glycerol
Form/Appearance	Liquid
Storage	Maintain refrigerated at 2-8°C for up to 2 weeks. For long term storage store at -20°C in small aliquots to prevent freeze-thaw cycles.
Note	For research use only
Isotype	IgG
Clonality	Polyclonal
Uniprot ID	P05787
Dilution Range	WB:1:1000-1:5000, IHC-P:1:20-1:200, IF:1:50-1:200
Expiration Date	12 months from date of receipt.



Western blot analysis of A549(Lane 1), M...



Western blot analysis of MCF7 whole cell...



Immunofluorescence analysis of HeLa cell...