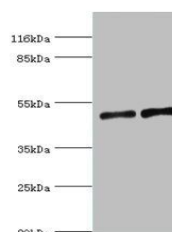


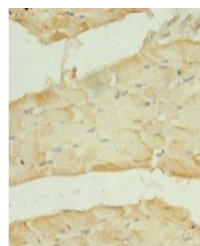
Product Datasheet

SLC2A4 antibody (orb350708)

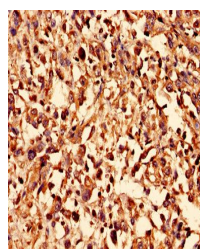
Description	SLC2A4 antibody
Species/Host	Rabbit
Reactivity	Human, Mouse
Conjugation	Unconjugated
Tested Applications	ELISA, IF, IHC, WB
Immunogen	Recombinant Human Solute carrier family 2, facilitated glucose transporter member 4 protein (223-287AA)
Target	SLC2A4
Preservatives	Preservative: 0.03% Proclin 300. Constituents: 50% Glycerol
Form/Appearance	Liquid
Storage	Upon receipt, store at -20°C or -80°C. Avoid repeated freeze.
Note	For research use only
Isotype	IgG
Clonality	Polyclonal
Uniprot ID	P14672
Dilution Range	WB:1:500-2000, IHC-P:1:20-200, IF:1:50-200
Expiration Date	12 months from date of receipt.



Western blot analysis of mouse heart tis...



Immunohistochemical staining of human sk...



Immunohistochemical staining of human me...