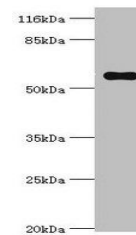


Product Datasheet

Pklr antibody (orb350632)

Description	Pklr antibody
Species/Host	Rabbit
Reactivity	Human, Rat
Conjugation	Unconjugated
Tested Applications	ELISA, WB
Immunogen	Recombinant Rat Pyruvate kinase PKLR protein (1-574AA)
Target	Pklr
Preservatives	Preservative: 0.03% Proclin 300. Constituents: 50% Glycerol
Form/Appearance	Liquid
Storage	Maintain refrigerated at 2-8°C for up to 2 weeks. For long term storage store at -20°C in small aliquots to prevent freeze-thaw cycles.
Note	For research use only
Isotype	IgG
Clonality	Polyclonal
Uniprot ID	P12928
Dilution Range	WB:1:200-1000
Expiration Date	12 months from date of receipt.



Western blot analysis of HeLa whole cell...