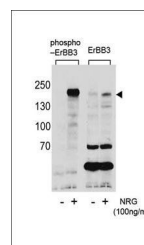
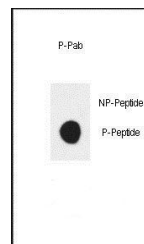


Product Datasheet

ERBB3 (phospho-Tyr1289) antibody (orb34940)

Description	Rabbit polyclonal to ERBB3 (phospho-Tyr1289)
Species/Host	Rabbit
Reactivity	Human
Conjugation	Unconjugated
Tested Applications	DOT, WB
Immunogen	Synthetic Peptide
Target	ERBB3
Form/Appearance	Purified polyclonal antibody supplied in PBS with 0.09% (W/V) sodium azide. This antibody is purified through a protein A column, followed by peptide affinity purification.
Storage	Maintain refrigerated at 2-8°C for up to 2 weeks. For long term storage store at -20°C in small aliquots to prevent freeze-thaw cycles
Note	For research use only
Isotype	Rabbit IgG
Clonality	Polyclonal
MW	148098
Uniprot ID	P21860
NCBI	NP_001005915.1 , NP_001973.2
Dilution Range	DOT: 1:500, WB: 1:1000
Expiration Date	12 months from date of receipt.



Western blot analysis of T47D cells using...