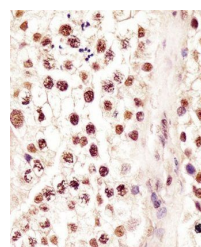
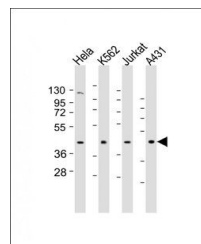


Product Datasheet

RBMX antibody (orb349042)

Description	Rabbit polyclonal antibody to RBMX.
Species/Host	Rabbit
Reactivity	Human
Conjugation	Unconjugated
Tested Applications	IHC-P, WB
Target	RBMX
Form/Appearance	Purified polyclonal antibody supplied in PBS with 0.09% (W/V) sodium azide. This antibody is purified through a protein A column, followed by peptide affinity purification.
Storage	Maintain refrigerated at 2-8°C for up to 2 weeks. For long term storage store at -20°C in small aliquots to prevent freeze-thaw cycles
Note	For research use only
Isotype	Rabbit IgG
Clonality	Polyclonal
MW	42332
Uniprot ID	P38159
Dilution Range	WB: 1:1000-1:2000, IHC-P: 1:25
Expiration Date	12 months from date of receipt.



Immunohistochemical staining of human te...