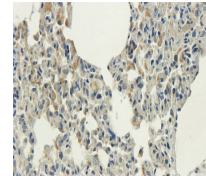

Product Datasheet

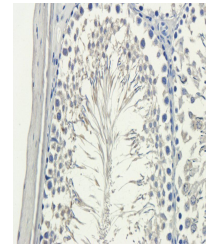
MCU antibody (orb348964)

Analysis Reagents.

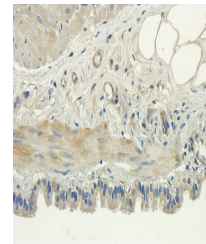
Description	MCU antibody
Species/Host	Rabbit
Reactivity	Human, Mouse, Rat
Conjugation	Unconjugated
Tested Applications	IHC-P, WB
Immunogen	KLH conjugated synthetic peptide derived from human MCU. Please contact us for the exact immunogen sequence. The peptide is available as orb374971.
Target	MCU
Form/Appearance	10 mM PBS, 0.02% sodium azide
Concentration	- 100 µg (in 200 µl): 0.5 mg/ml- 200 µg (in 400 µl): 0.5 mg/ml
Storage	Store at 4°C for up to two weeks. For long term storage, aliquot and store at -20°C, avoid freeze/thaw cycles.
Note	For research use only
Isotype	IgG
Clonality	Polyclonal
Purity	Polyclonal antibodies are purified by peptide affinity chromatography
MW	40 kDa
Uniprot ID	Q3UMR5 , Q8NE86 , M0RDI5
Entrez	90550
Dilution Range	IHC-P: 1:100-600, WB: 1:100-500, (based on 0.5 mg/ml)
Expiration Date	12 months from date of receipt.



IHC-P staining of rat lung tissue using ...



Immunohistochemical staining of paraffin...



Immunohistochemical staining of rat lung...