
Product Datasheet

MCU antibody (orb348963)

Description

MCU antibody

Species/Host

Rabbit

Reactivity

Human, Mouse, Rat

Conjugation

Unconjugated

Tested

IHC-P, WB

Applications
Immunogen

KLH conjugated synthetic peptide derived from human MCU. Please contact us for the exact immunogen sequence. The peptide is available as orb374970.

Target

MCU

Form/Appearance

10 mM PBS, 0.02% sodium azide

Concentration

- 100 µg (in 200 µl): 0.5 mg/ml- 200 µg (in 400 µl): 0.5 mg/ml

Storage

Store at 4°C for up to two weeks. For long term storage, aliquot and store at -20°C, avoid freeze/thaw cycles.

Note

For research use only

Isotype

IgG

Clonality

Polyclonal

Purity

Polyclonal antibodies are purified by peptide affinity chromatography

MW

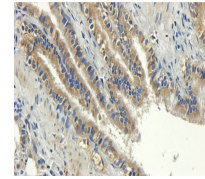
40 kDa

Uniprot ID
[Q3UMR5](#), [Q8NE86](#), [M0RDI5](#)
NCBI
[001257608](#), [001270679](#)
Entrez
[90550](#)
Dilution Range

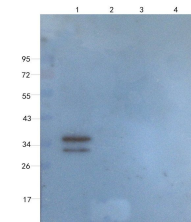
IHC-P: 1:100-800, WB: 1:100-2000, (based on 0.5 mg/ml)

Expiration Date

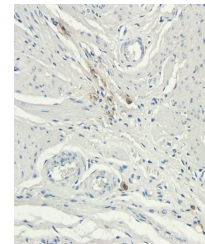
12 months from date of receipt.



Immunohistochemical staining of paraffin...



WB analysis of mouse spleen (lane 1), He...



Immunohistochemical staining of paraffin...