

---

## Product Datasheet

### VCAM1 antibody (orb348962)

**Description**

VCAM1 antibody

**Species/Host**

Rabbit

**Reactivity**

Human, Mouse, Rat

**Conjugation**

Unconjugated

**Tested Applications**

IHC-P, WB

**Immunogen**

KLH conjugated synthetic peptide derived from human VCAM1. Please contact us for the exact immunogen sequence. The peptide is available as orb374969.

**Target**

VCAM1

**Form/Appearance**

10 mM PBS, 0.02% sodium azide

**Concentration**

- 100 µg (in 200 µl): 0.5 mg/ml- 200 µg (in 400 µl): 0.5 mg/ml

**Storage**

Store at 4°C for up to two weeks. For long term storage, aliquot and store at -20°C, avoid freeze/thaw cycles.

**Note**

For research use only

**Isotype**

IgG

**Clonality**

Polyclonal

**Purity**

Polyclonal antibodies are purified by peptide affinity chromatography

**MW**

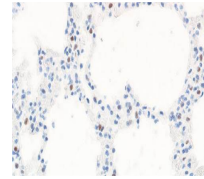
81 kDa

**Uniprot ID**
[P29534](#), [P19320](#), [P29533](#)
**NCBI**
[001069](#), [001078](#)
**Entrez**
[7412](#)
**Dilution Range**

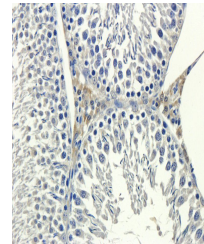
IHC-P: 1:200, WB: 1:100-2000, (based on 0.5 mg/ml)

**Expiration Date**

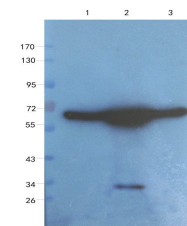
12 months from date of receipt.



Immunohistochemical staining of Mouse lu...



Immunohistochemical staining of paraffin...



WB analysis of rat testis (lane 1), rat ...