
Product Datasheet

Osteocalcin antibody (orb348959)

Description

Osteocalcin antibody

Species/Host

Rabbit

Reactivity

Human, Mouse, Rat

Conjugation

Unconjugated

Tested Applications

IHC-P, WB

Immunogen

KLH conjugated synthetic peptide derived from human Osteocalcin. Please contact us for the exact immunogen sequence. The peptide is available as orb374966.

Target

Osteocalcin

Form/Appearance

10 mM PBS, 0.02% sodium azide

Concentration

- 100 µg (in 200 µl): 0.5 mg/ml- 200 µg (in 400 µl): 0.5 mg/ml

Storage

Store at 4°C for up to two weeks. For long term storage, aliquot and store at -20°C, avoid freeze/thaw cycles.

Note

For research use only

Isotype

IgG

Clonality

Polyclonal

Purity

Polyclonal antibodies are purified by peptide affinity chromatography

MW

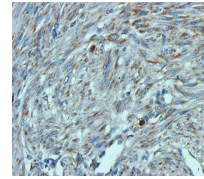
11 kDa

Uniprot ID
[P86547](#), [P02818](#), [P04640](#)
NCBI
[954642](#)
Entrez
[632](#)
Dilution Range

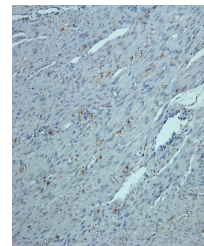
IHC-P: 1:100-600, WB: 1:100-2000

Expiration Date

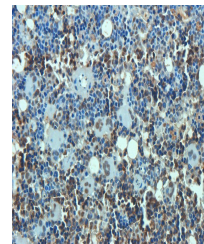
12 months from date of receipt.



IHC-P image of human endometrial cancer ...



Immunohistochemical staining of human en...



IHC-P staining of rat bone marrow tissue...