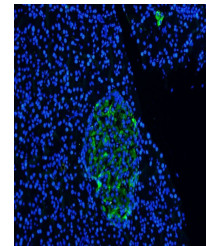


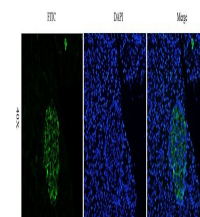
Product Datasheet

CEA antibody (orb348861)

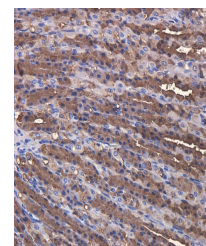
Description	Human monoclonal antibody to CEA
Species/Host	Mouse
Reactivity	Human
Conjugation	Unconjugated
Tested Applications	FC, IHC-P
Immunogen	Carcinoembryonic antigen (CEA) describes a set of highly related glycoproteins involved in cell adhesion normally produced in gastrointestinal tissue during fetal development, but only at very low levels in adults.
Target	carcinoembryonic antigen (CEA)
Preservatives	PBS with 0.02% Proclin 300.
Concentration	1 mg/ml
Storage	Store at 4°C for up to 3 months. For longer storage, aliquot and store at -20°C.
Note	For research use only
Application notes	This antibody binds to carcinoembryonic antigen and was used in the diagnosis of mammary carcinomas.
Isotype	IgG1
Clonality	Monoclonal
Purity	Purified
Uniprot ID	Q13984
Expiration Date	12 months from date of receipt.



Immunofluorescence analysis of rat pancreas tissue using CEA antibody.



IF image of rat pancreas tissue using CEA antibody.



Immunohistochemical staining of rat stomach tissue using CEA antibody.