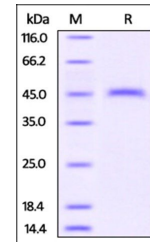


Product Datasheet

Mouse CD3 epsilon Protein (orb348808)

Description	Mouse CD3E, Fc Tag is expressed from human 293 cells (HEK293). It contains AA Asp 23 - Asp 108 (Acce...
Reactivity	Mouse
Endotoxins	1.0 EU per µg
Conjugation	Unconjugated
Target	CD3 epsilon
Preservatives	Tris with Glycine, Arginine and NaCl, pH7.5
Form/Appearance	Powder
Storage	-20°C
Tag	C-Fc
Note	For research use only
Application notes	This protein carries a human IgG1 Fc tag at the C-terminus. The protein has a calculated MW of 36 kDa. The protein migrates as 40-43 kDa when calibrated against Star Ribbon Pre-stained Protein Marker under reducing (R) condition (SDS-PAGE) due to glycosylation.
Protein Sequence	Asp 23 - Asp 108
Purity	95%
Source	Mouse CD3E, Fc Tag (orb348808) is expressed from human 293 cells (HEK293). It contains AA Asp 23 - Asp 108 (Accession # P22646).
MW	36 kDa
Uniprot ID	P22646
Expiration Date	6 months from date of receipt.



SDS-PAGE analysis of Mouse CD3 epsilon p...