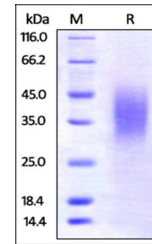


Product Datasheet

Mouse BTLA Protein (orb348802)

Description	Mouse BTLA, His Tag is expressed from human 293 cells (HEK293). It contains AA Glu 30 - Gly 176 (Acc...
Reactivity	Mouse
Endotoxins	1.0 EU per µg
Conjugation	Unconjugated
Target	BTLA
Preservatives	PBS, pH7.4
Form/Appearance	Powder
Storage	-20°C
Tag	C-10×His
Note	For research use only
Application notes	This protein carries a polyhistidine tag at the C-terminus. The protein has a calculated MW of 18.6 kDa. The protein migrates as 30-45 kDa under reducing (R) condition (SDS-PAGE) due to glycosylation.
Protein Sequence	Glu 30 - Gly 176
Purity	95%
Source	Mouse BTLA, His Tag (orb348802) is expressed from human 293 cells (HEK293). It contains AA Glu 30 - Gly 176 (Accession # Q32MV9).
MW	18.6 kDa
Uniprot ID	Q32MV9
Expiration Date	6 months from date of receipt.



SDS-PAGE analysis of Mouse BTLA protein