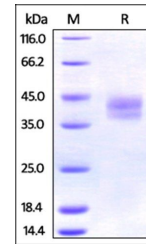


Product Datasheet

Mouse PD-L2 / B7-DC Protein (orb348790)

Description	Mouse PD-L2, His Tag is expressed from human 293 cells (HEK293). It contains AA Leu 20 - Arg 219 (Ac...
Reactivity	Mouse
Endotoxins	1.0 EU per µg
Conjugation	Unconjugated
Target	PD-L2
Preservatives	PBS, pH7.4
Form/Appearance	Powder
Storage	-20°C
Tag	C-10×His
Note	For research use only
Application notes	This protein carries a polyhistidine tag at the C-terminus. The protein has a calculated MW of 24.4 kDa. The protein migrates as 37-45 kDa under reducing (R) condition (SDS-PAGE) due to glycosylation.
Protein Sequence	NP_067371
Purity	95%
Source	Mouse PD-L2, His Tag (orb348790) is expressed from human 293 cells (HEK293). It contains AA Leu 20 - Arg 219 (Accession # NP_067371).
MW	24.4 kDa
Uniprot ID	Q9WUL5
NCBI	NP_067371
Expiration Date	6 months from date of receipt.



SDS-PAGE analysis of Mouse PD-L2 protein