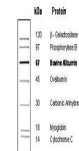


Product Datasheet

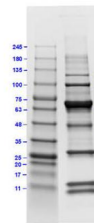
Protein Molecular Weight Marker (orb348606)

Description	Protein Molecular Weight Marker
Conjugation	Unconjugated
Tested Applications	SDS-PAGE
Preservatives	0.01% (w/v) Sodium Azide
Form/Appearance	Liquid (in 1x Loading Buffer)
Concentration	1X
Storage	Store vial at -20° C.
Note	For research use only
Application notes	<p>Protein Molecular Weight Marker has been tested and is designed for use in accurate estimation of protein molecular weight in SDS-polyacrylamide gel electrophoresis and western blotting. It contains: [62.5 mM Tris-HCl, pH 6.8, 2% (w/v) SDS, 250 mM NaCl, 1mM EDTA, 4% (v/v) β-Mercaptoethanol, 35% (v/v) Glycerol and 0.05% (w/v) bromophenol blue.] Thaw the cocktail at room temperature. Gently invert vial several times to ensure that the solution is homogeneous and that any precipitated material is re-dissolved. A loading volume of 5-10µl is appropriate for most gel formats.</p>
Purity	<p>Protein Molecular Weight Marker is supplied in 1X loading buffer and is ready-to-use. This product are unstained markers optimized for use with Coomassie blue staining, but the loading volume can be adjusted for compatibility with other staining methods (i.e. silver staining). The intensity of the 67 kDa bovine albumin band has been increased to serve as a reference.</p>
Hazard Information	Non-Toxic
Expiration Date	6 months from date of receipt.

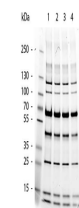


4-20% Tris-Glycine SDS-PAGE Stained with Coomassie Blue

SDS PAGE of Protein Molecular Weight Mar...



SDS PAGE Results of Protein Molecular We...



SDS-Page of Protein Molecular Weight Mar...